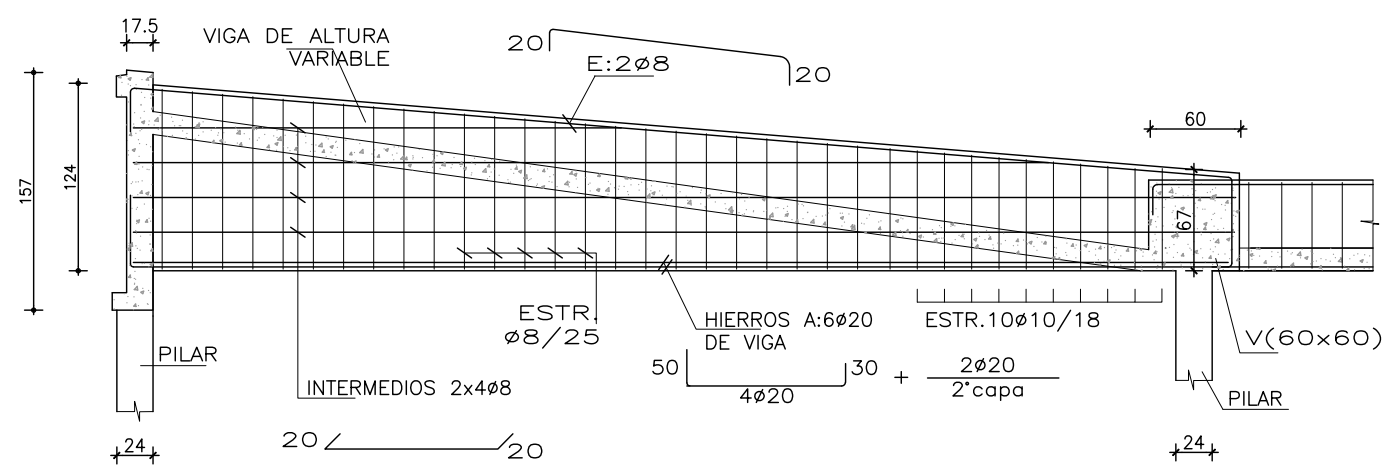
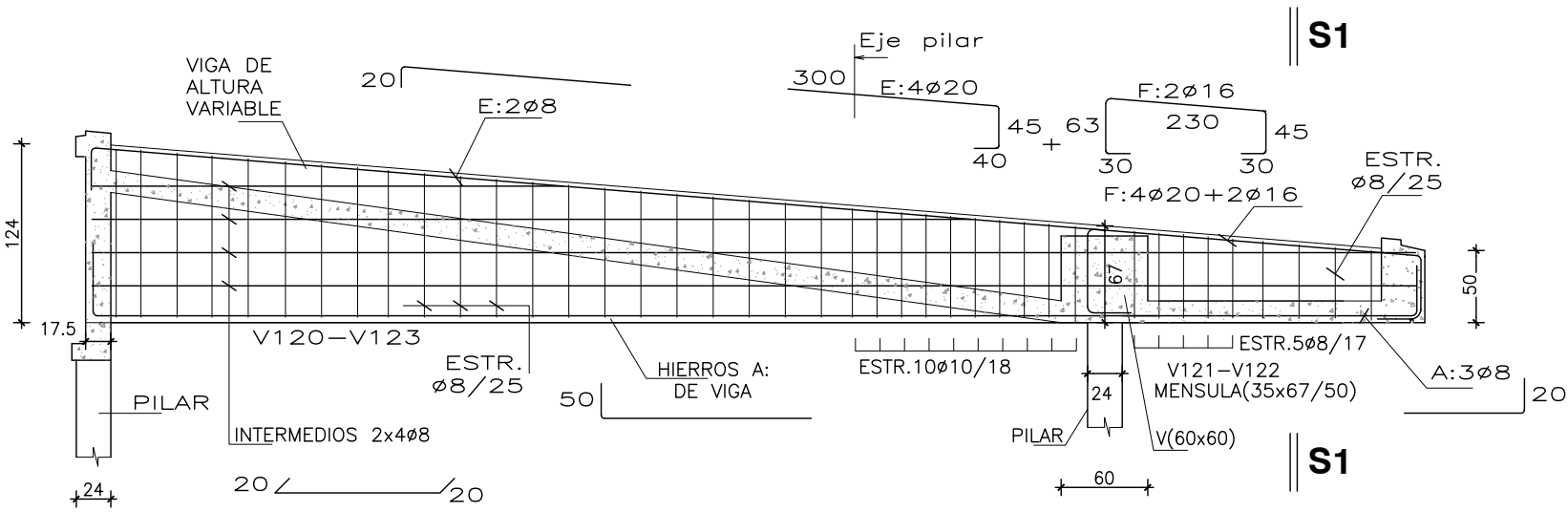


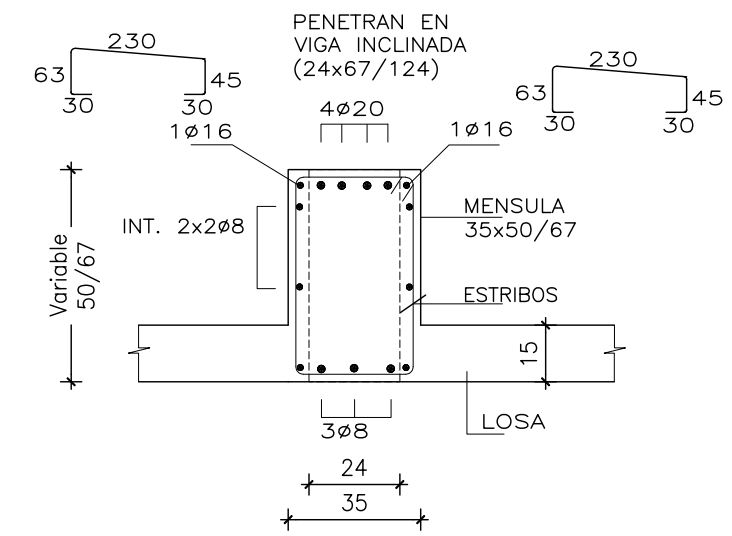
DETALLE V108(24X124/67)-V114(24X67/124)-V124(24X124/67)
V130(24X67/124)-V131(24X124/67)-V137(24X67/124)
escala 1:50



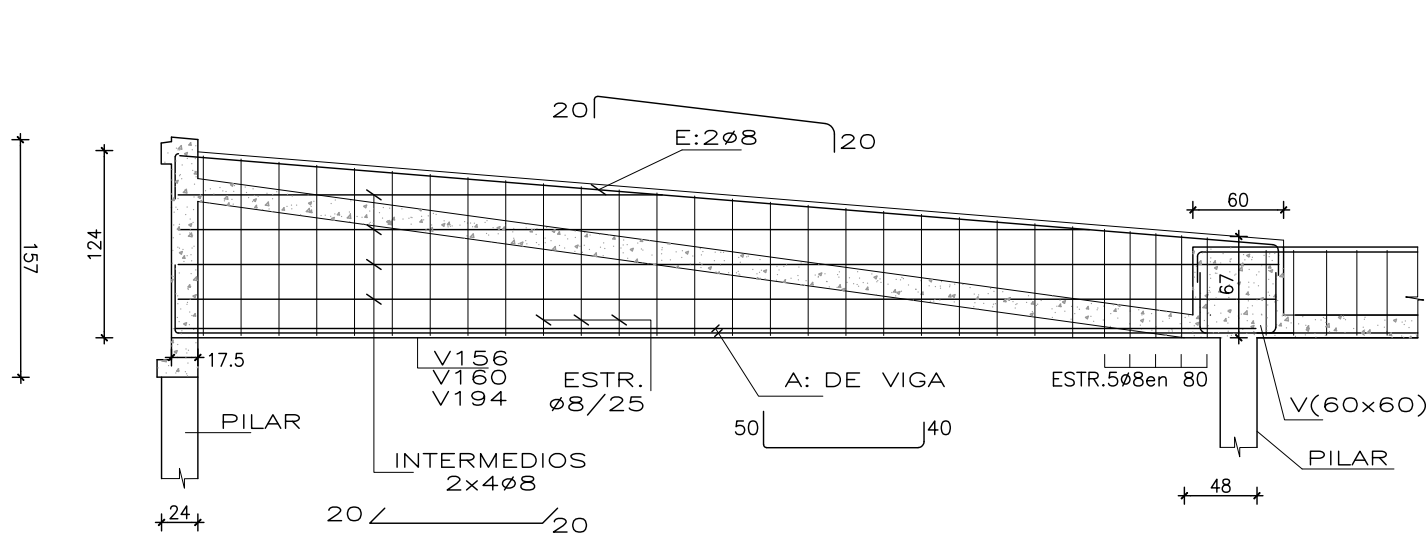
DETALLE V120/V121(24x124/67)(35x67/50)
V122/V123(35x50/67)(24x67/124)
escala 1:50



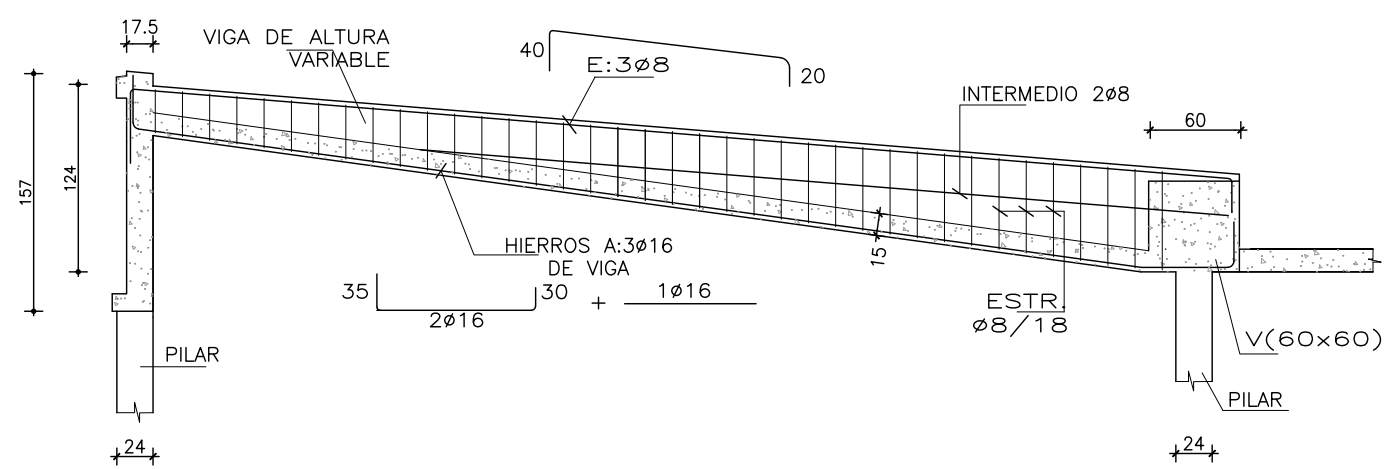
CORTE S1-S1
escala 1:20



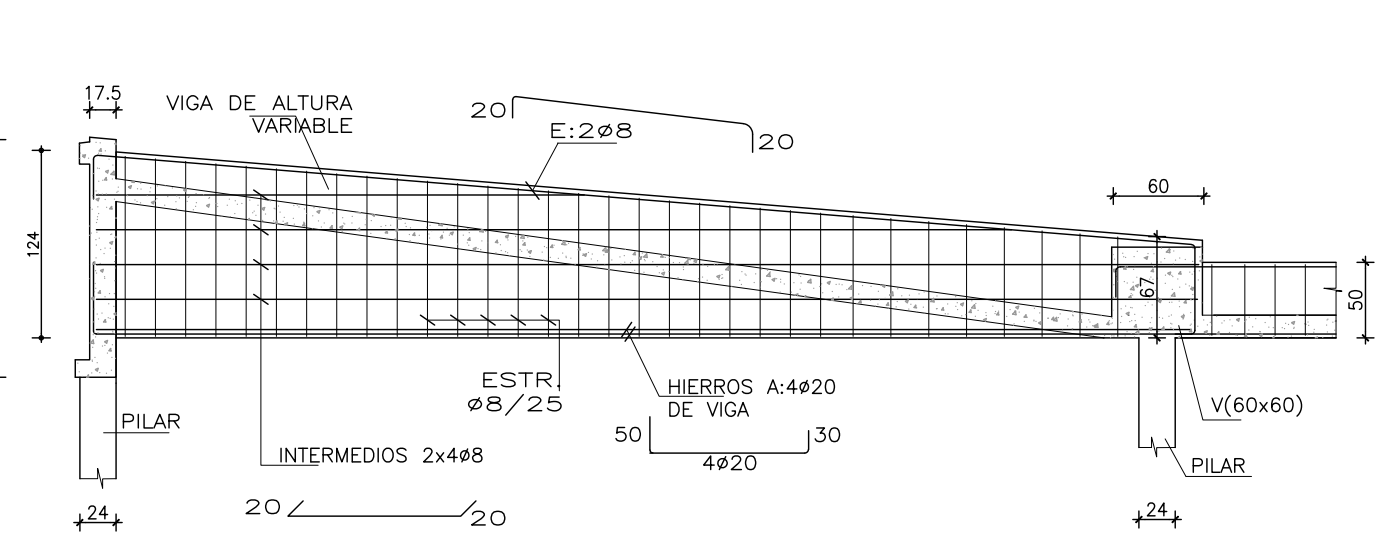
DETALLE V156(24x124/67)-V160(24x67/124)-V194(24x67/124)
escala 1:50



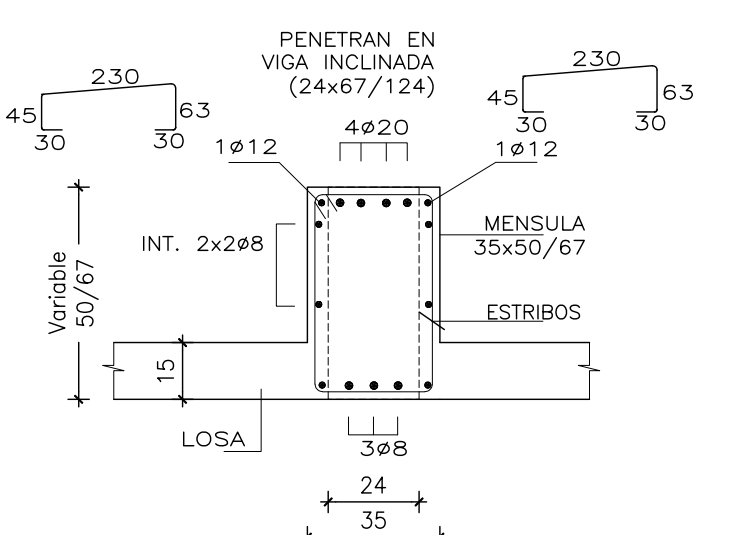
DETALLE V161(24x32.5/67)V164(24x67/32.5)
V189(24x67/32.5)INV.
escala 1:50



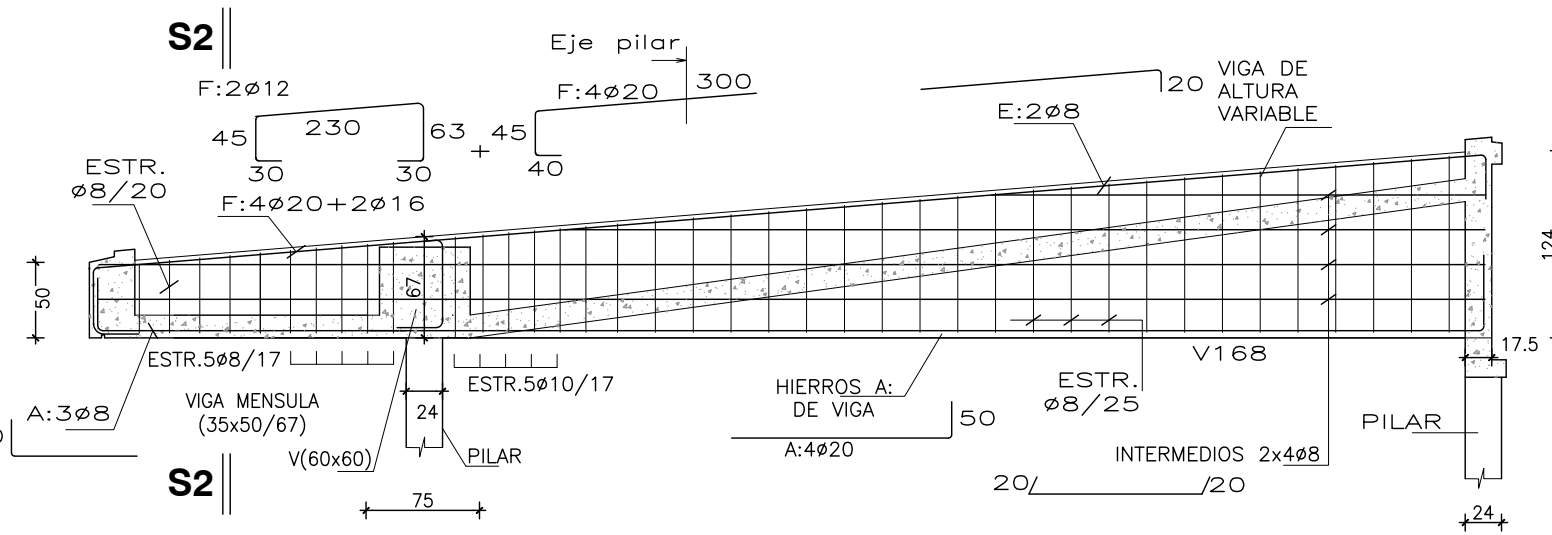
DETALLE V165-V177(24X124/67)
escala 1:50



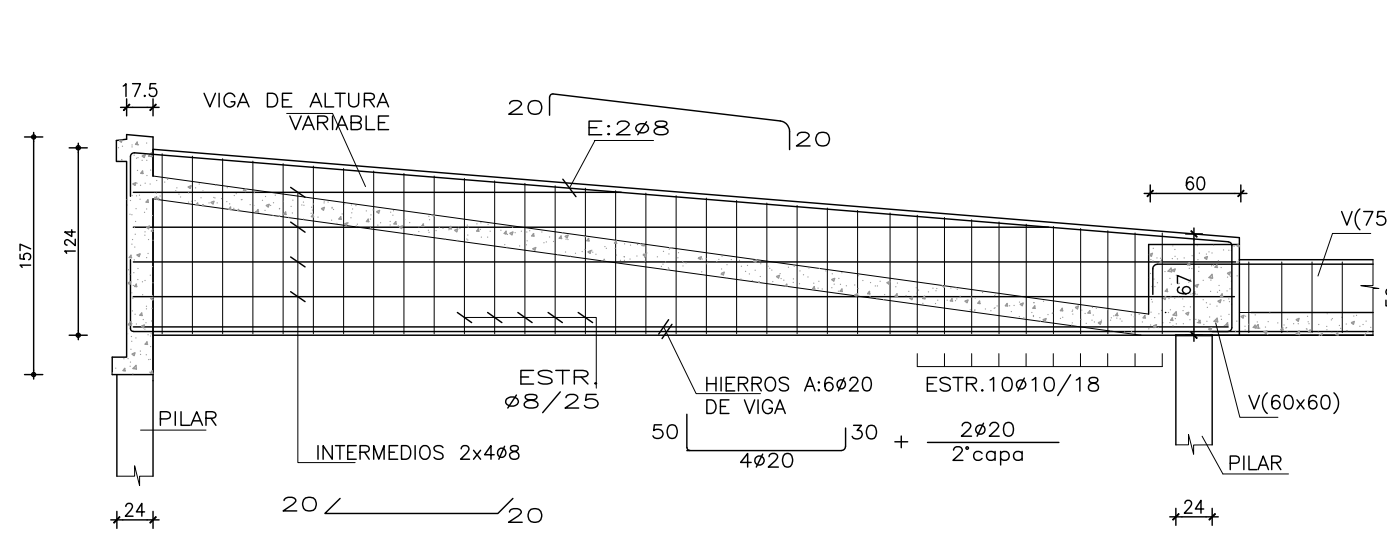
CORTE S2-S2
escala 1:20



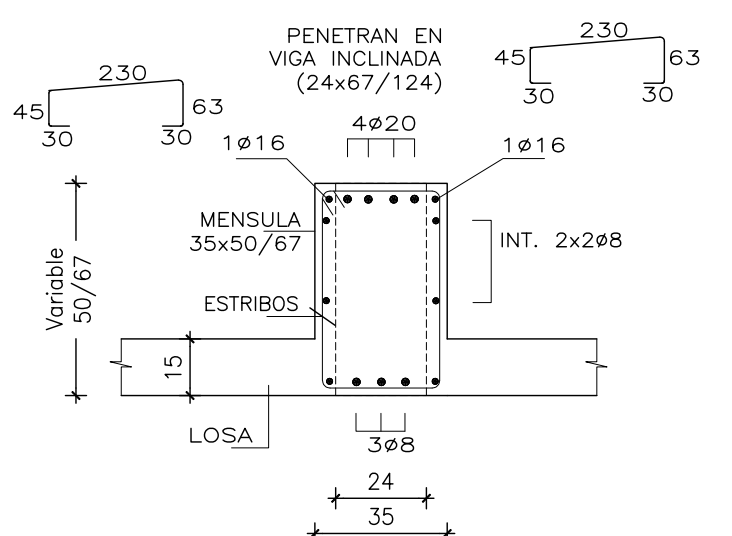
DETALLE V167/168(35x50/67)/(24x67/124)
escala 1:50



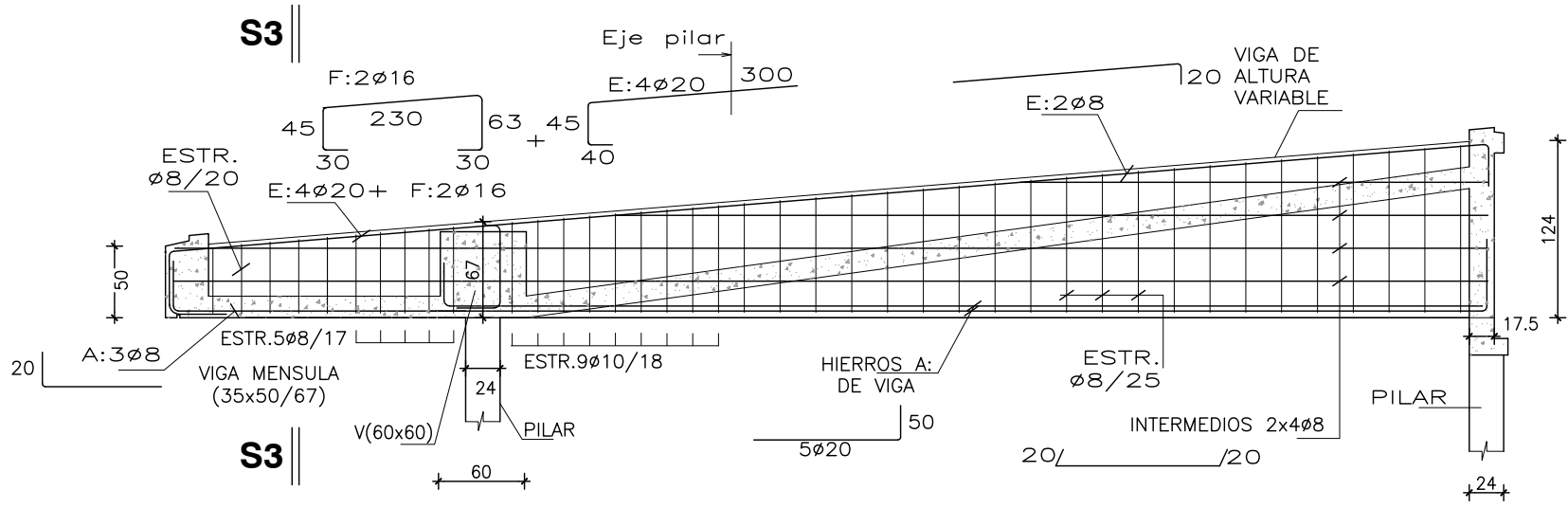
DETALLE V169-V173(24X124/67)
escala 1:50



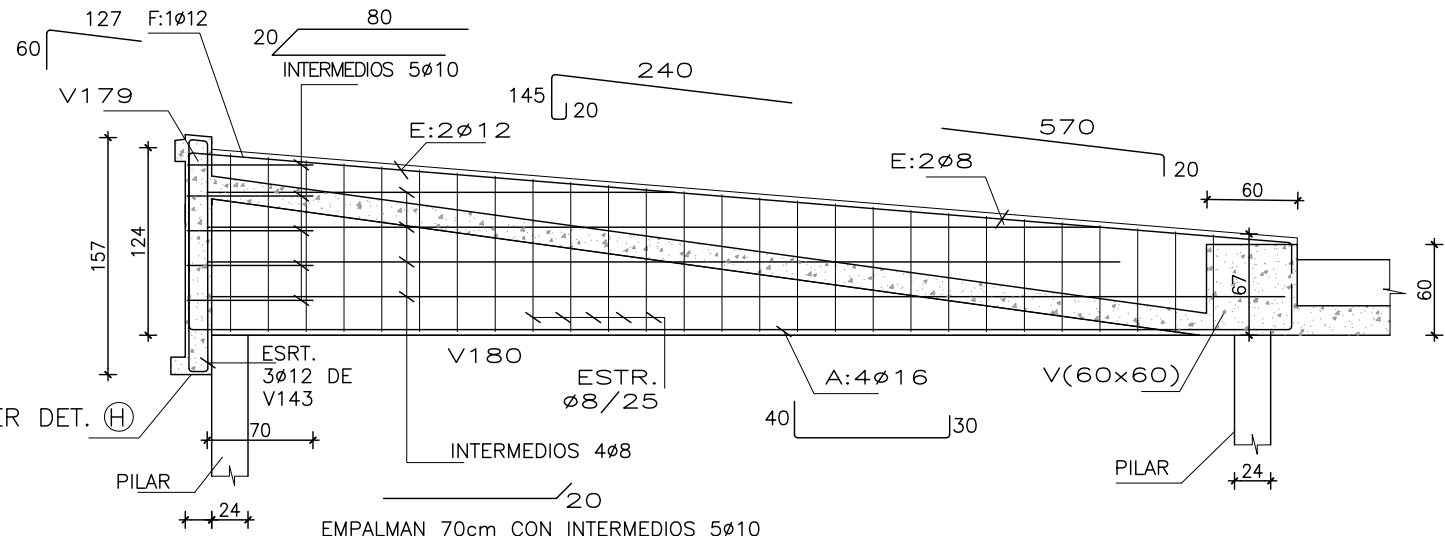
CORTE S3-S3
escala 1:20



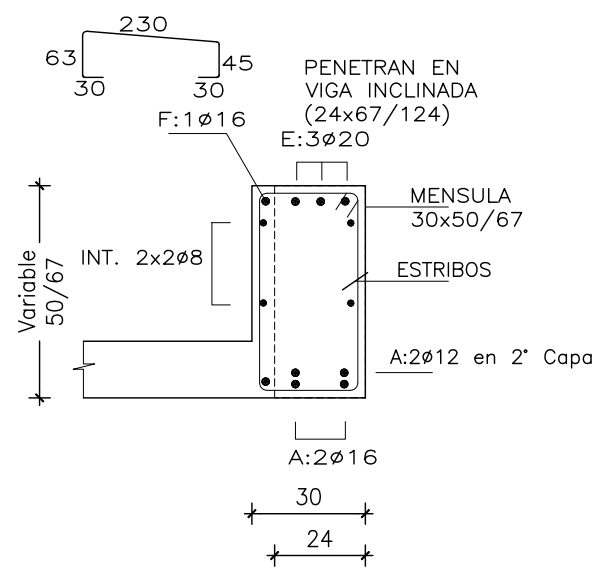
DETALLE V171/V172-V175/176 (35x50/67)/(24x67/124)
escala 1:50



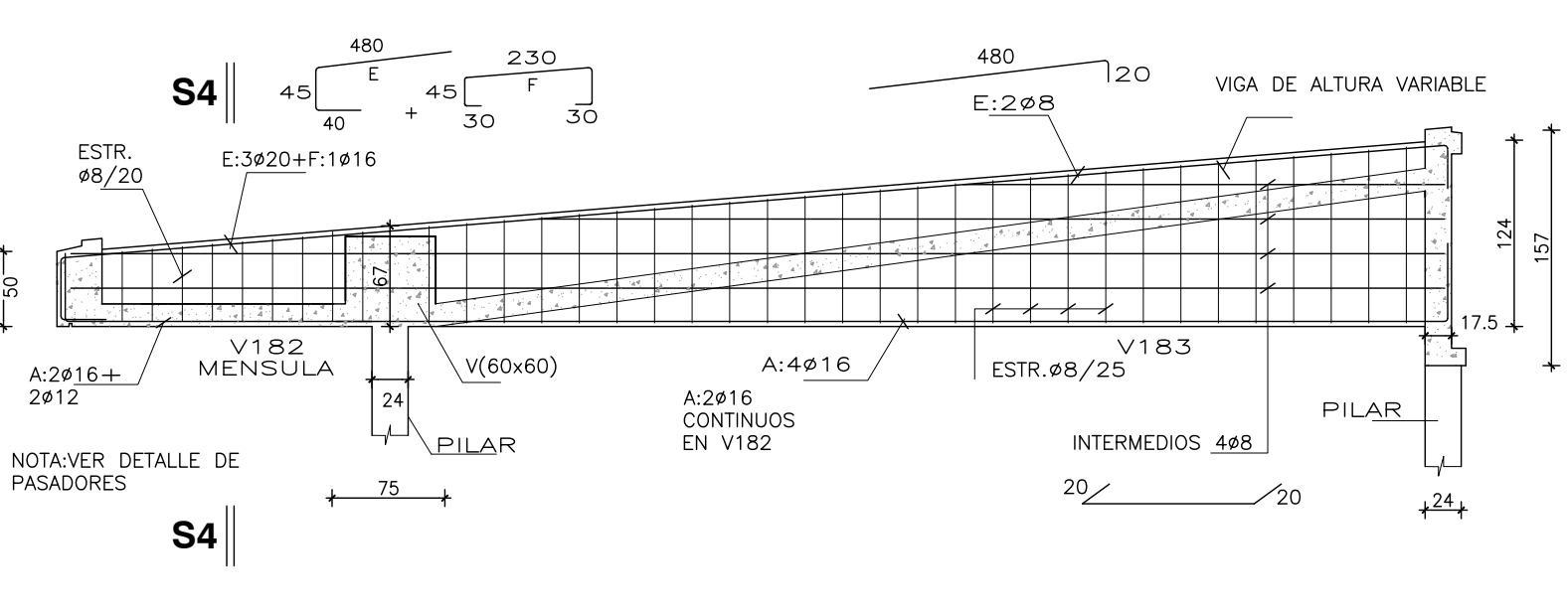
DETALLE V179(24x124/122)/V180(24x124/67)
escala 1:50



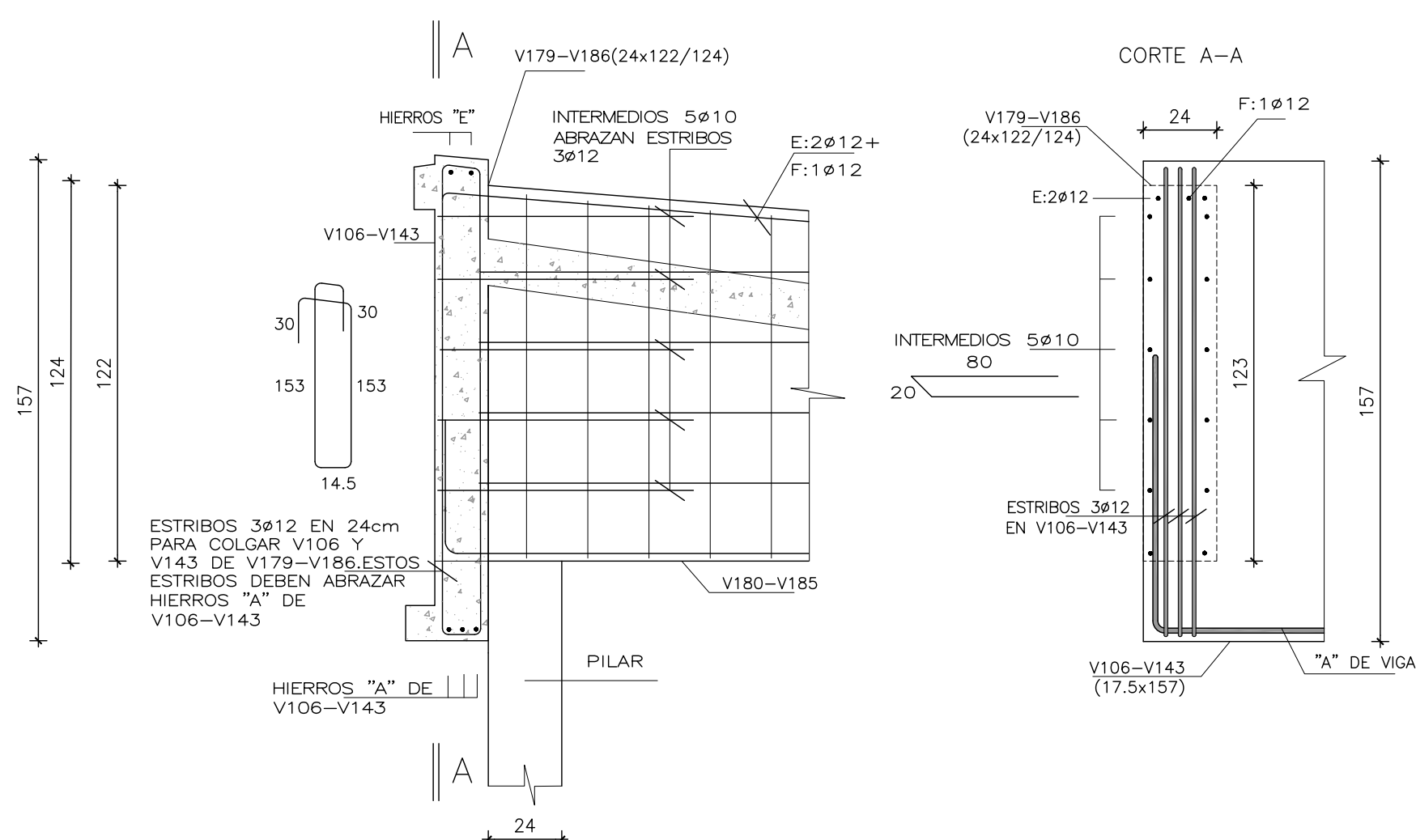
CORTE S4-S4
escala 1:20



DETALLE V182(30x50/67)/183(24x67/124)
escala 1:50

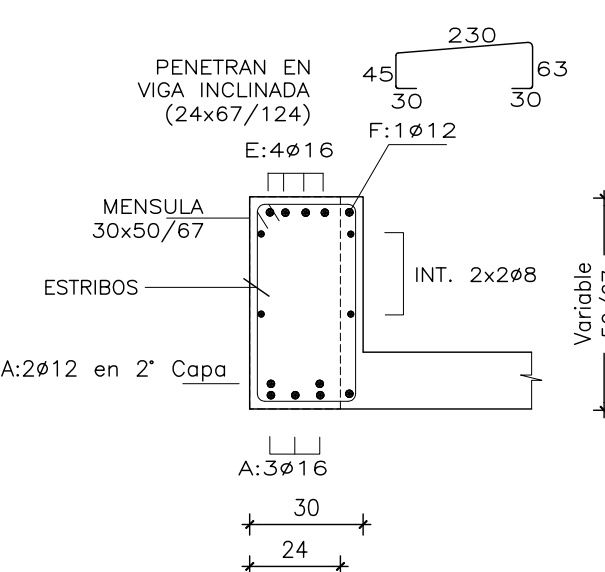


DETALLE DE APOYO V106 Y V143 EN V179 Y V186
escala 1:20

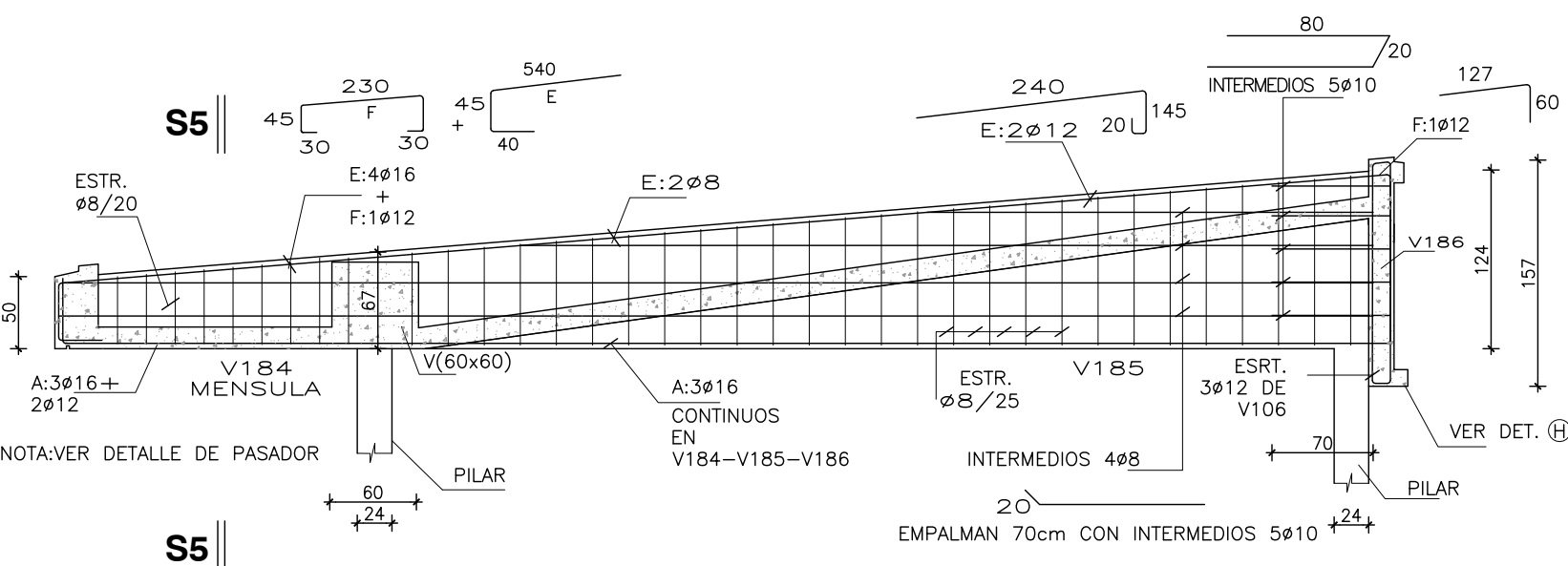


MATERIALES	
HORMIGON • C 30.0 SEGUN NORMA UNIT 972:97 EN GENERAL.	
HORMIGON CONTRAPISO, VEREDAS.	
• C 20.0 SEGUN NORMA UNIT 972:97.	
ACERO EN HORMIGON ARMADO	
• LIMITE CONVENCIONAL DE FLEUENCIA 5000 kg/cm2 SEGUN	
NORMAS UNIT 988:95 (ADM 500) O 843:95 (ADN 500)	
(CONFORMADO)	

CORTE S5-S5
escala 1:20



DETALLE V184(30x50/67)/V185(24x67/6122)/186(24x122/124)
escala 1:50



A.N.E.P.		P.A.E.P.U.	
COMPONENTE PLANTA FISICA		LAMINA	
AREA DE PROYECTOS		L60	
OBRA	ESCUELA 224 ROGER BALET	TIPOS	
	MONTEVIDEO	E08	
DESCRIPCION	DETALLE VIGAS SOBRE PLANTA BAJA		
		FECHA 2020	ESCALA Indicada
ARCHIVO	-		
COORD. PLANTA FISICA	ARQ. M. VAZQUEZ	CO-COORDINADORA DE PROYECTO	ARQ. LUCIA LOMBARDI
PROYECTISTA	ARQ. LUCIA LOMBARDI / ARQ. NATALIE CORDERO	COLABORADOR	
ASESOR ESTRUCTURA: ING. VIRGINIA TRAVERSO			